



MV ANN ROUSING

2650 DWT

Dry cargo – specialized in heavy
scrap – volume cargoes

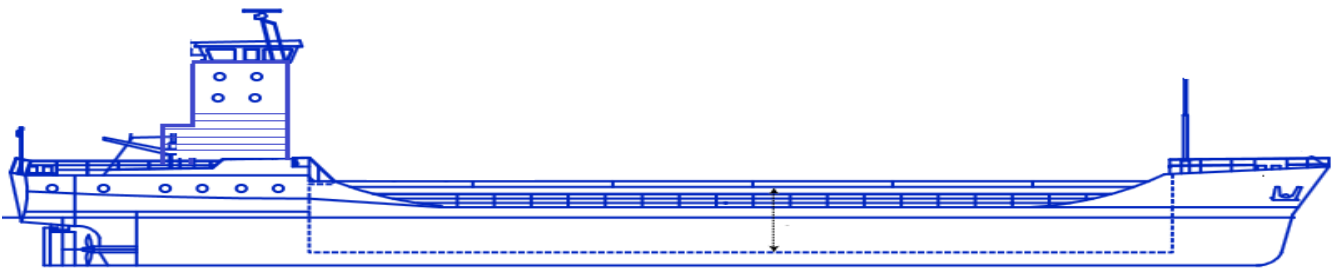
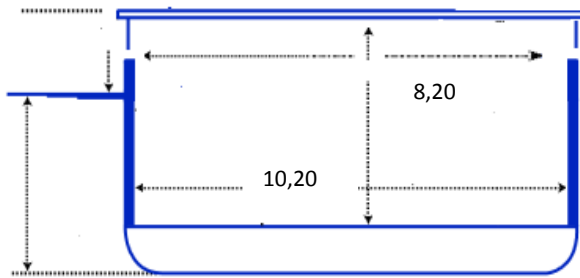


SHIP'S CONTACTS

Tel: +45 4015 4308

E-mail: ann.rousing@rousing.net

Particulars		Main dimensions		Propulsion	
Name:	M/V Ann Rousing	LOA:	84.90m	Main Engine:	Deutz SBV8M628
Call sign:	OYIP2	Breadth:	12.92m	ME Output:	1.330 Kw
IMO Nr:	9037903	Draft:	4.49 m	Bowthruster:	Jastram 160 Kw
Flag:	Danish	Airdraft - ballast:	26.00 m	Speed – ballast:	10 knots
Home Port:	Liseleje	Airdraft - loaded:	24.00 m	Speed – loaded:	10 knots
Built:	1991	WLHC – ballast:	7.50 m		
Class:	Germanisher Lloyd	WLCH – loaded:	6.00 m		
Ice Class:	I			Special features	
P&I:	British Marine	Cargo hold		Strongbeam	
		Grain / Bale:	165.400 cbft	Long cargo hold	
		Timber cap:	165.400 cbft	Lake Vänern fitted	
Measurements		Tank top pressure:	25 mts/m2	Heavy cargoes on tanktop	
GT:	2.326	Hatch pressure:	1.2 mts/m2		
NT:	1.333	Bulkhead(s):	1 Bulkhead		
DWT:	2.752 mts				
DWCCS:	2.550 mts				
DWCC W::	2.450 mts				



8,15

