



BALTIC SHIPPING COMPANY A/S



MV RIX LAGOON

Main Details and Capacities

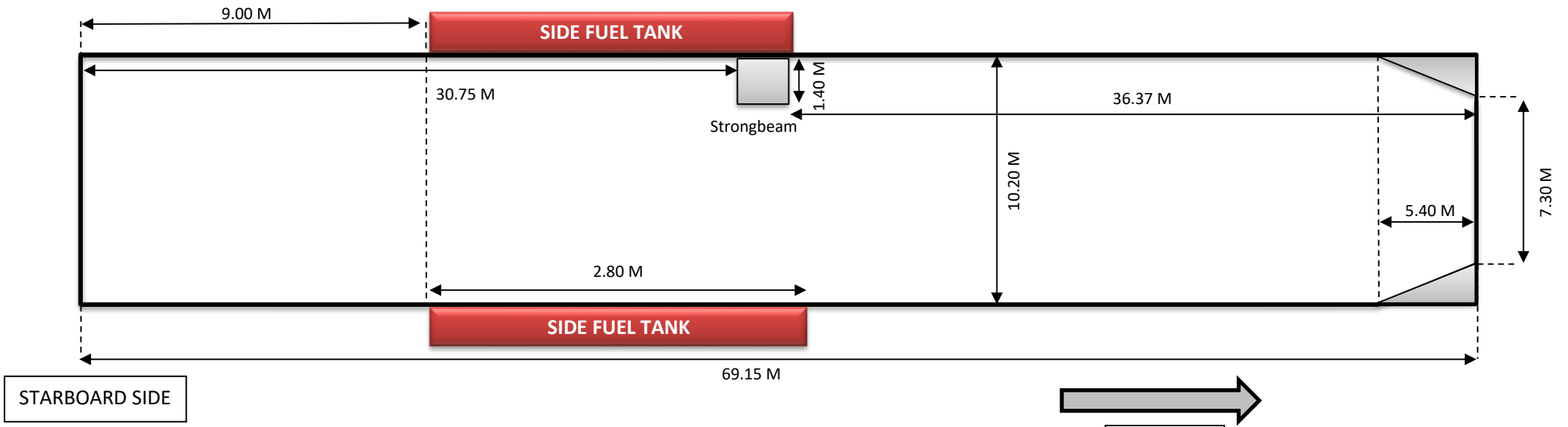
BUILT:	1999 - KOMARNO	LOA:	99.90 Meters
FLAG - HOMEPORT:	CYPRUS - MONROVIA	BEAM:	12.80 Meters
IMO NO:	9192624	MAX DRAFT SSW:	5.68 Meters
CALL SIGN:	5BTE5	DRAFT IN BALLAST:	3.90 Meters
PANDI INSURANCE:	ALANDIA	AIRDRAFT IN BALLAST:	30.30Meters
CLASSIFICATION:	RINA	AIRDRAFT LOADED:	23.10 Meters
ICE CLASS:	1D	HO/HA:	1 2
DWCC SUMMER:	4.200 MTS	DIMS. CARGO HOLD(S):	69.15 X 10.20 X 8.17 M
DWCC WINTER:	4.020 MTS	DIMS. HATCH:	69.15 X 10.20 Meters
DWAT:	4.439 MTS	HATCH TYPE:	Multifold Crocodile
IMO FITTED:	4.1 4.2 4.3 5.1 6.1 8 9	WLHC BALLAST:	6.90 Meters
NAABSA FITTED:	NO	WLHC LOADED:	3.50 Meters
LAKE VÄNERN FITTED:	NO	MAX PRESSURES:	Tanktop 15.00 Mts/m2 Hatch cover 1.70Mts/m2
GT:	2.997	MAIN ENGINE:	Deutz
NT:	1.741	MAIN ENGINE OUT PUT:	2.550 KW
GRAIN CAPACITY:	206.272 CBFT	BOW TRUSTER:	220 KW
BULKHEAD(S):	2 Pieces 9 Positions	SERVICE SPEED	10.00Knots



All details given in good faith without any guarantee

TOP VIEW

Over-view



SIDE VIEW

Side-view

