



BALTIC SHIPPING COMPANY A/S



MV RIX MELODY

Main Details and Capacities

BUILT:	1997, Damen	LOA:	89.00 Meters
FLAG - HOMEPORT:	Cyprus, Limassol	BEAM:	13.40 Meters
IMO NO:	9142631	MAX DRAFT SSW:	6.95 Meters
CALL SIGN:	5BXV5	DRAFT IN BALLAST:	3.20 Meters
PANDI INSURANCE:	Alandia	AIRDRAFT IN BALLAST:	23.90 Meters
CLASSIFICATION:	BV	AIRDRAFT LOADED:	21.60 Meters
ICE CLASS:	1A	HO/HA:	1/1
DWCC SUMMER:	5.200 Mts	DIMS. CARGO HOLD(S):	64.10 x 11.55 x 8.85 Meters
DWCC WINTER:	5.050 Mts	DIMS. HATCH:	3 x 18,85 x 10.4 Meters
DWAT:	5.993.3 Mts	HATCH TYPE:	Pontoons
IMO FITTED:	1.4S 2.1 2.2 3 4.1 4.2 4.3 5.1 6.1 8 9	WLHC BALLAST:	6.51 Meters
NAABSA FITTED:	No	WLHC LOADED:	3.03 Meters
LAKE VÄNERN FITTED:	Yes 5.40 M	MAX PRESSURES:	Tanktop 10.0 Mts/m2 Hatch cover 1.6 Mts/m2
GT:	2.904 Mts	MAIN ENGINE:	Wartsila 6R32E, BHP 3345, 2460 kW
NT:	1.656 Mts	MAIN ENGINE OUT PUT:	2.460 kW
GRAIN CAPACITY:	211.673 CBFT	BOW TRUSTER:	210 kW
BULKHEAD(S):	2 Pieces	SERVICE SPEED	12.5 Knots

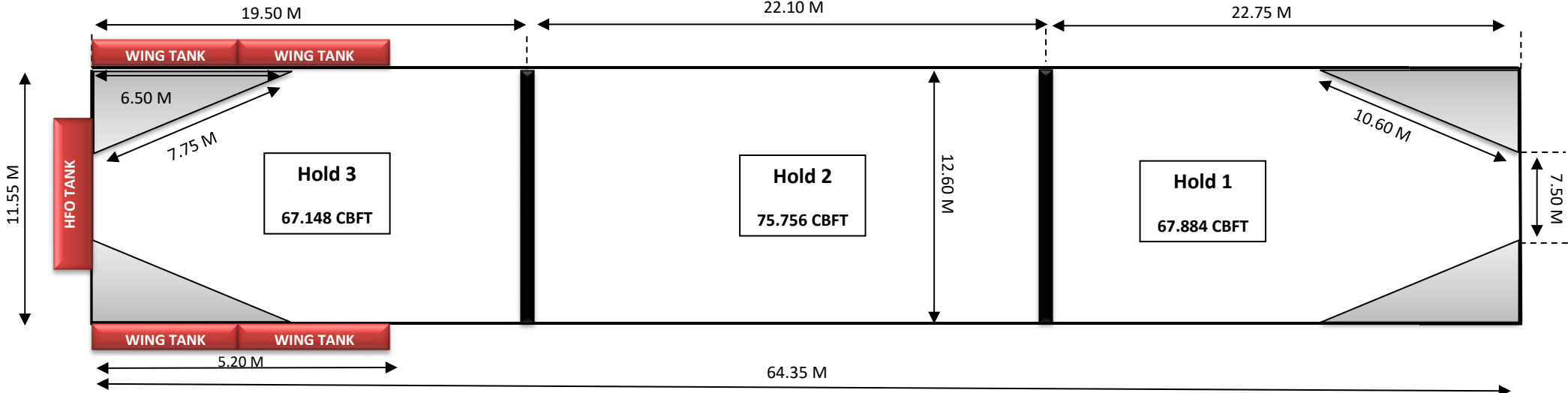


All details given in good faith without any guarantee

TOP VIEW

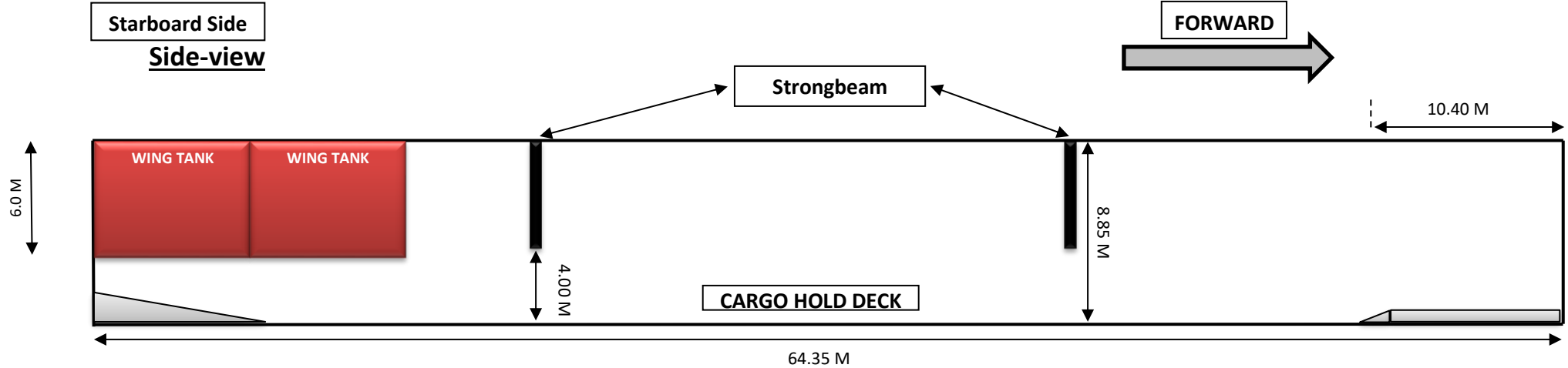
Port Side

Over-view



Starboard Side

Side-view



Vessel is 3 holds 3 hatches with possibility to raise bulkhead under strongbeam for driveable hold all way through.