



MV Rix Zenith

SHIP'S CONTACTS

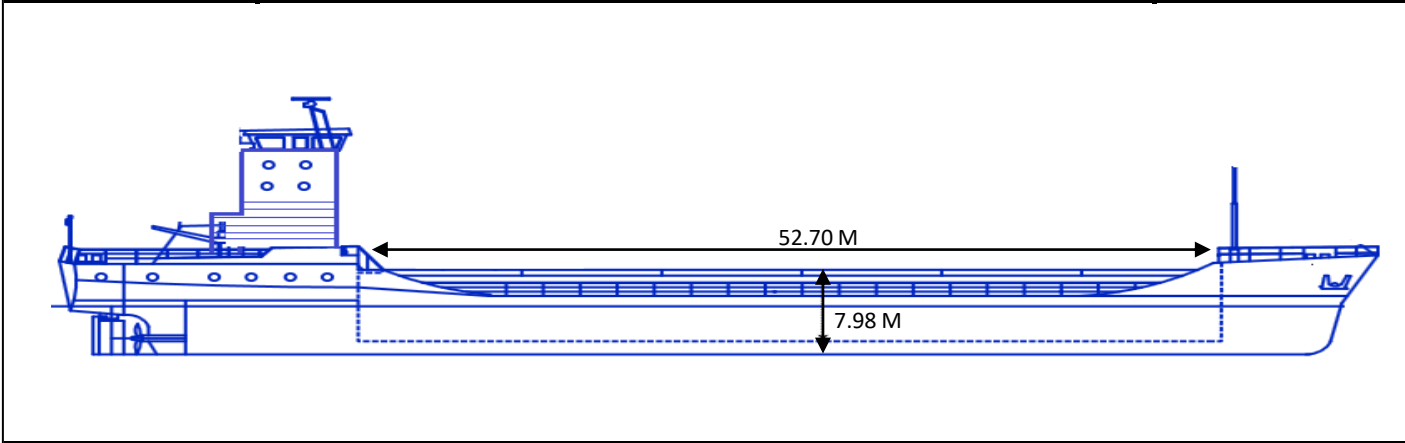
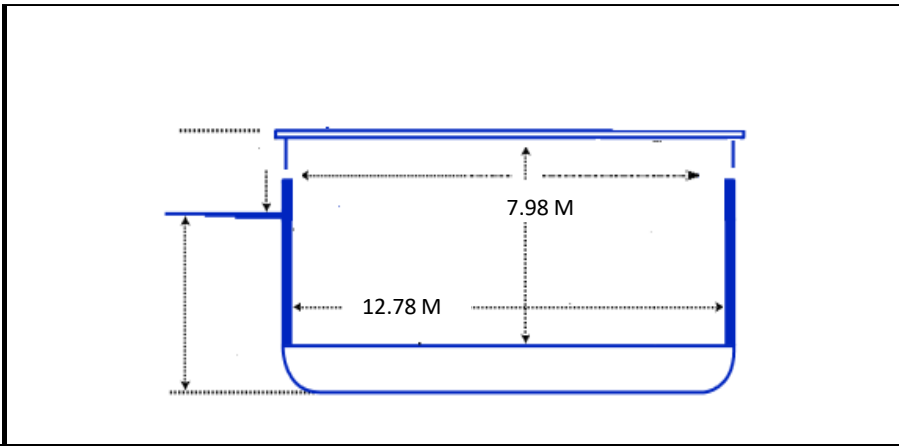
Tel: +371 2578 3263

E-mail: Rixzenith@shipnet.eu

Particulars	
Name:	Rix Zenith
Call sign:	5BMV5
IMO Nr:	9240249
Flag:	Cyprus
Home Port:	Limassol
Built:	2001
Class:	Rina
Ice Class:	N/A
P&I:	Carina
Measurements	
GT:	2.995
NT:	1.563
DWT:	4.267
DWCC summer:	4.200 MTS
DWCC Winter:	4.000 MTS

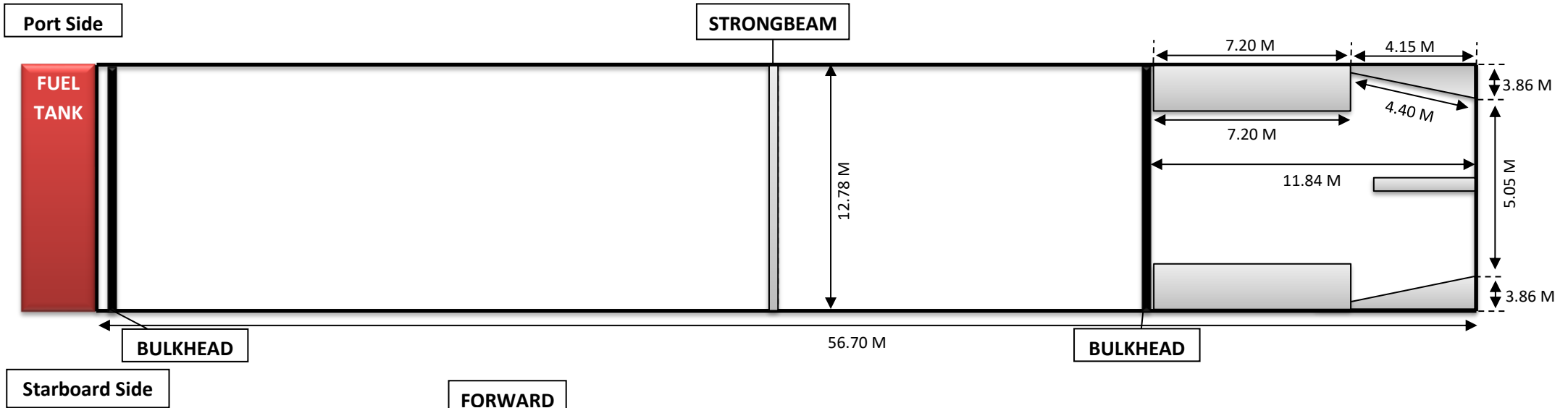
Main dimensions	
LOA:	90.33 M
Breadth:	15.20 M
Draft:	5.64 M
Airdraft - ballast:	25.20 M
Airdraft - loaded:	23.20 M
WLCH – ballast:	N/A
WLCH – loaded:	N/A
Cargo hold	
Grain / Bale:	195.850 CBFT
Timber cap:	N/A
Tank top pressure:	12.00 Mts/m2
Hatch pressure:	1.61 Mts/m2
Bulkhead(s):	2 pcs

Propulsion	
Main Engine:	Mak type
ME Output:	2.080 KW
Bowthruster:	220 KW
Speed - ballast:	9.50 Kts
Speed - loaded:	9.50 Kts
Special features	
Strongbeam	
Good grain stability	
Imo fitted	

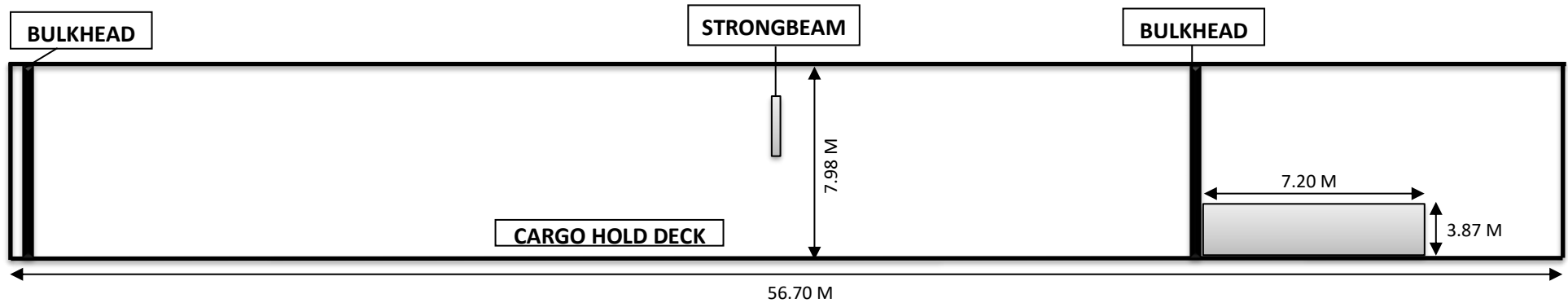


"MV Rix Zenith" Scheme in Cargo Hold

Over-view



Side-view



All details given in good faith without any guarantee